

# SPECIFICATIONS

1. Coupling bands shall conform to the requirements of AASHTO Specifications M 196M.
2. Band thickness shall not be less than 1.22 mm and shall not be less than 2 standard thicknesses lighter than the thickness of the pipe.
3. For pipe arches, use the same width band as for circular pipe of equal periphery
4. Helical coupling bands with angle connections may be supplied as one piece (one pair of angles) or two pieces (two pair of angles as shown).
5. Corrugated band sheet may be produced as a corrugated and curved strip or cut from helical pipe. If band is cut from helical pipe, it may be produced from oversize pipe or a flap of some pipe configuration may be used if "lapping joint" is required.

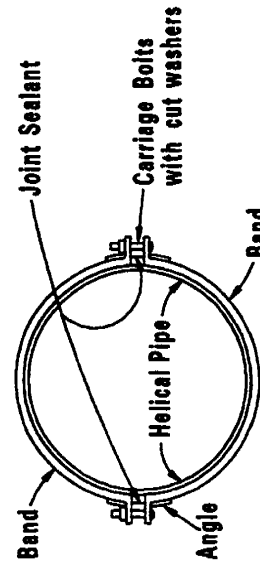
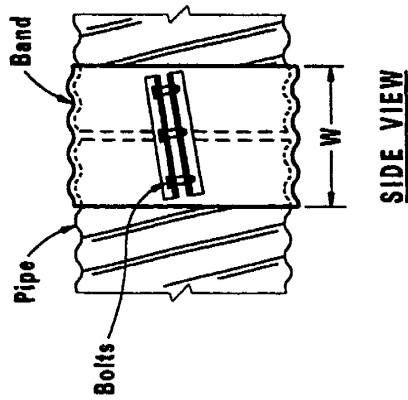
# INTENDED USE

Coupling of corrugated aluminum pipe sections or appurtenances.

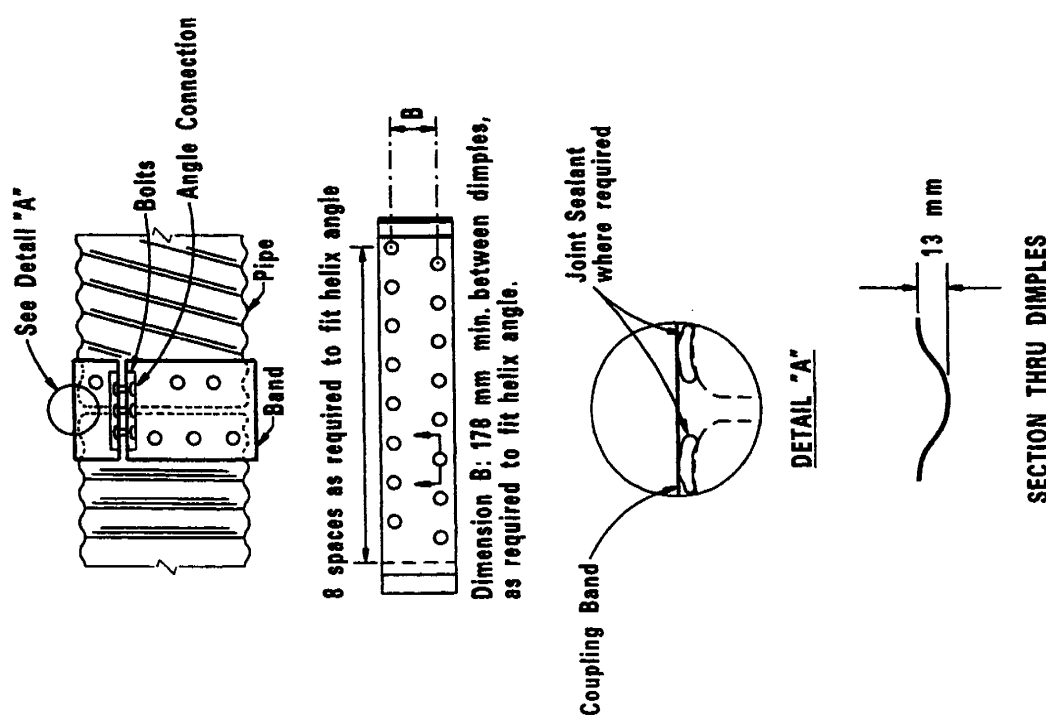
CORRUGATED ALUMINUM COUPLING BAND  
HELICAL BAND

AASHTO-AGC-ARTBA  
TF-13 DRAWING

CMBA-19-96



NOTE: second angle connection optional to 1050 mm diam., required above 1050 mm diam.

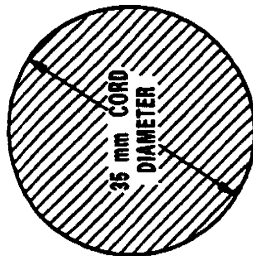
<p style="text-align: center;"><b>SPECIFICATIONS</b></p> <ol style="list-style-type: none"> <li>1. Coupling bands shall conform to the requirements of AASHTO Specifications M 198M.</li> <li>2. Band thickness shall not be less than 1.22 mm and shall not be less than 2 standard thicknesses lighter than the thickness of the pipe.</li> <li>3. For pipe arches, use the same width band as for circular pipe of equal periphery</li> </ol> <p style="text-align: center;"><b>INTENDED USE</b></p> <p>Coupling of field cut pipe end(s) on helical corrugations. Pre-wrap with geotextile as necessary to ensure soil tightness.</p>	 <p style="text-align: center;"><b>DETAIL "A"</b></p> <p style="text-align: center;"><b>SECTION THRU DIMPLES</b></p>
<p style="text-align: center;"><b>CORRUGATED ALUMINUM COUPLING BAND UNIVERSAL BAND</b></p>	<p style="text-align: center;"><b>AASHTO-AGC-ARTBA TF-13 DRAWING</b></p>
<p style="text-align: center;"><b>CMBA-20-96</b></p>	<p style="text-align: center;"><b>CMBA-20-96</b></p>

### SPECIFICATIONS

1. Ring gaskets used on corrugated metal pipe shall be in accordance with AASHTO M 198.
2. 20-mm cord diameter is used on 68 mm x 13 mm corrugation for either reformed ends of helical pipe or riveted pipe.
3. 22-mm cord diameter is used on 75 mm x 25 mm or 125 mm x 25 mm corrugations for reformed ends of helical pipe.
4. 35-mm cord diameter is used on 75 mm x 25 mm corrugation riveted pipe.
5. AASHTO M 198A (O-Ring) Gasket is used on round pipe shapes.
6. AASHTO M 198B (plastic) gasket may be used on round pipe or pipe arch shapes.

### INTENDED USES

Use with annular type band couplers when watertight joints are required.



O-RING GASKET CROSS SECTION

CORRU-GATION	68 X 13 mm	68 X 13 mm	125 X 25 mm	75 X 25 mm
CORD DIA.	20 mm	22 mm	22 mm	35 mm
NOMINAL PIPE I.D.	300 375 450 525 600 675 750 825 900	1050 1200 1350 1500 1650 1800 1950 2100 2250 2400	1350 1500 1650 1800 1950 2100 2250 2400 2550 2700 2850 3000	900 1050 1200 1350 1500 1650 1800 1950 2100 2250 2400 2550 2700 2850 3000
Note: All dimensions are in millimeters				

### RING GASKETS

AASHTO-AGC-ARTBA  
TF-13 DRAWING

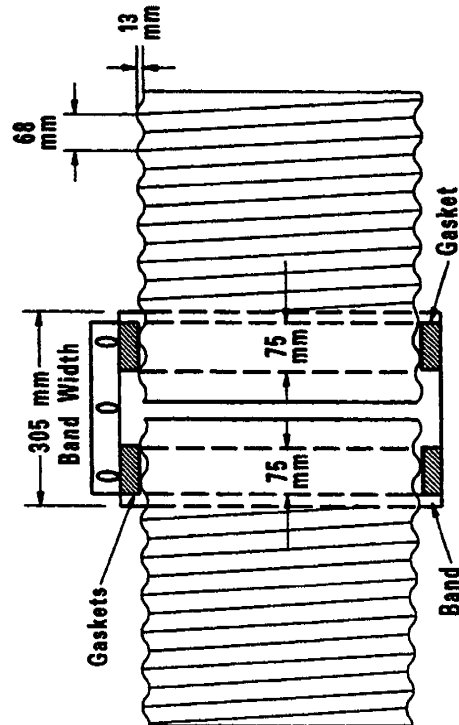
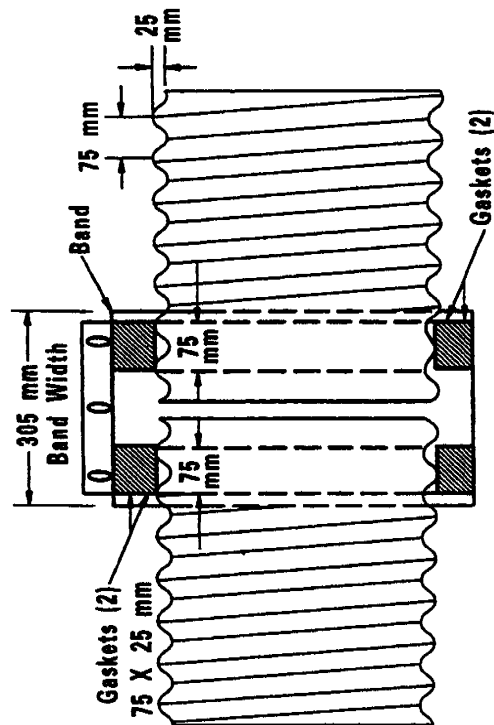
CMBS-21-96

General purpose- ASTM D 1058, RE41 closed cell neoprene gasket showing 2 /side 75 mm wide x 25 mm thick continuous

75 x 25 mm Corrugation

General purpose- ASTM D 1058, Type RE41 75 mm x 25 mm continuous closed cell neoprene gasket showing 1/side

68 x 13 mm Corrugation

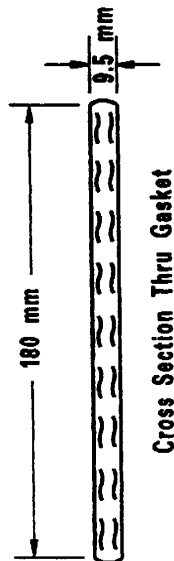


FLAT BANDS & GASKETS

AASHTO-AGC-ARTBA  
TF-13 DRAWING

CMBS-22-86

Note: All measurements are in millimeters



Cross Section Thru Gasket

NOMINAL PIPE DIAMETER	GASKET LENGTH (mm)
375	1118
450	1359
525	1600
600	1829
675	2032
750	2286
825	2464
900	2718
1050	3200
1200	3658
1350	4064
1500	4547
1650	5029
1800	5436
1950	5893
2100	6299
2250	6782
2400	7264

## SPECIFICATIONS

Gaskets shall be closed cell neoprene, skinned all four sides and meeting the requirements of ASTM specification D 1056 Grade SCE-43L. Gaskets shall be of 1-piece continuous construction.

## INTENDED USES

Use with corrugated or flat band couplers when watertight joints are required.

## SLEEVE GASKETS

AASHTO-AGC-ARTBA  
TF-13 DRAWING

CMBS-23-96

## **PART 3**

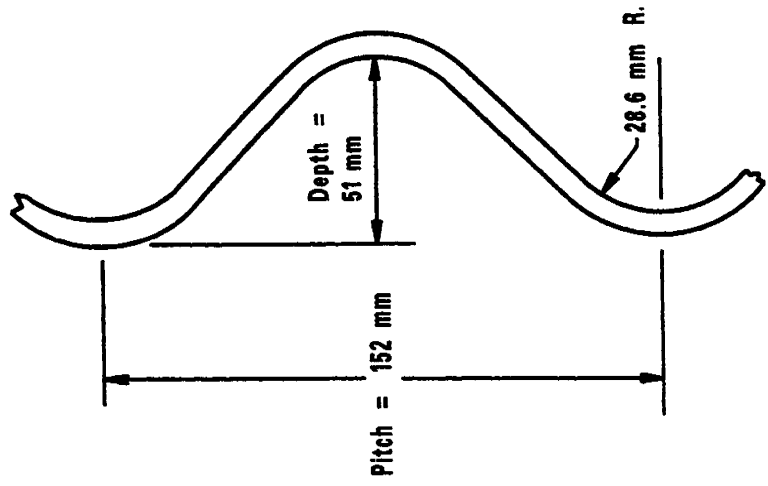
### **STRUCTURAL PLATE DRAINAGE PRODUCTS (SP)**

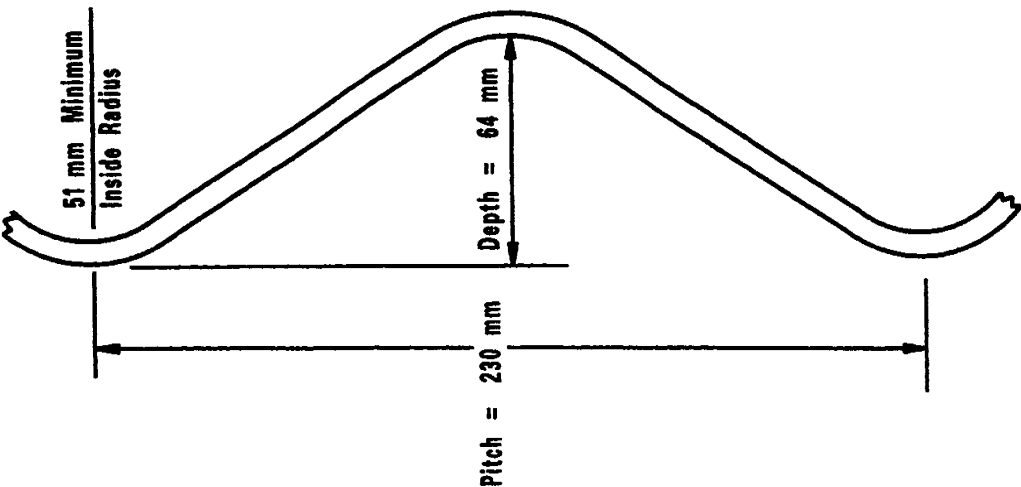


## SECTION SPC—STANDARD CORRUGATIONS

Steel Structural Plate Standard Corrugations	SPCS-1-96	98
Aluminum Alloy Structural Plate Standard Corrugations	SPCA-2-96	99



<p><b>APPLICABLE SPECIFICATIONS</b></p> <p>Corrugated steel structural plate pipe shall conform to the requirements of:</p> <p>AASHTO M 167M (galvanized steel)</p> <p>AASHTO M 243 (bituminous coated)</p> <p>AASHTO M 111 (hot dip galvanize after fabrication)</p> <p><b>INTENDED USE</b></p> <p>Culverts, short bridges, underpasses, storm sewers and bridge replacement.</p> <p><b>NOMINAL GALVANIZED THICKNESS</b></p> <table><tr><td>2.82 mm</td></tr><tr><td>3.56</td></tr><tr><td>4.32</td></tr><tr><td>4.79</td></tr><tr><td>5.54</td></tr><tr><td>6.32</td></tr><tr><td>7.11</td></tr><tr><td>7.87</td></tr><tr><td>9.65</td></tr></table>	2.82 mm	3.56	4.32	4.79	5.54	6.32	7.11	7.87	9.65	 <p>Pitch = 152 mm</p> <p>Depth = 51 mm</p> <p>28.6 mm R.</p> <p>152 mm X 51 mm Corrugation</p>
2.82 mm										
3.56										
4.32										
4.79										
5.54										
6.32										
7.11										
7.87										
9.65										
<p><b>STEEL STRUCTURAL PLATE STANDARD CORRUGATIONS</b></p>	<p>AASHTO-AGC-ARTBA TF-13 DRAWING</p>									
<p>SPCS-1-96</p>										

	<p><b>APPLICABLE SPECIFICATIONS</b></p> <p>Corrugated aluminum alloy structural plate pipe shall conform to the requirements of:</p> <p>AASHTO M 219M (aluminum) AASHTO M 243 (bituminous coated)</p> <p><b>INTENDED USE</b></p> <p>Culverts, short bridges, bridge replacement, underpasses, and storm sewers.</p> <p><b>STANDARD THICKNESS</b></p> <p>2.54 mm 3.18 3.81 4.44 5.08 5.72 6.35</p>
	<p><b>ALUMINUM ALLOY STRUCTURAL PLATE STANDARD CORRUGATIONS</b></p>
<p>AASHTO-AGC-ARTBA TF-13 DRAWING</p>	<p>SPCA-2-86</p>