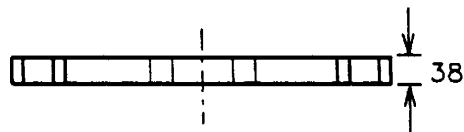


TOP



ELEVATION

DETAIL A: SLIPBASE PLATE

OMNI-DIRECTIONAL SLIPBASE W SIGN & BASE POST



PWF07a-b

SHEET NO:

DATE

3 OF 4

1996

This is a preview. Click here to purchase the full publication.

This page intentionally left blank

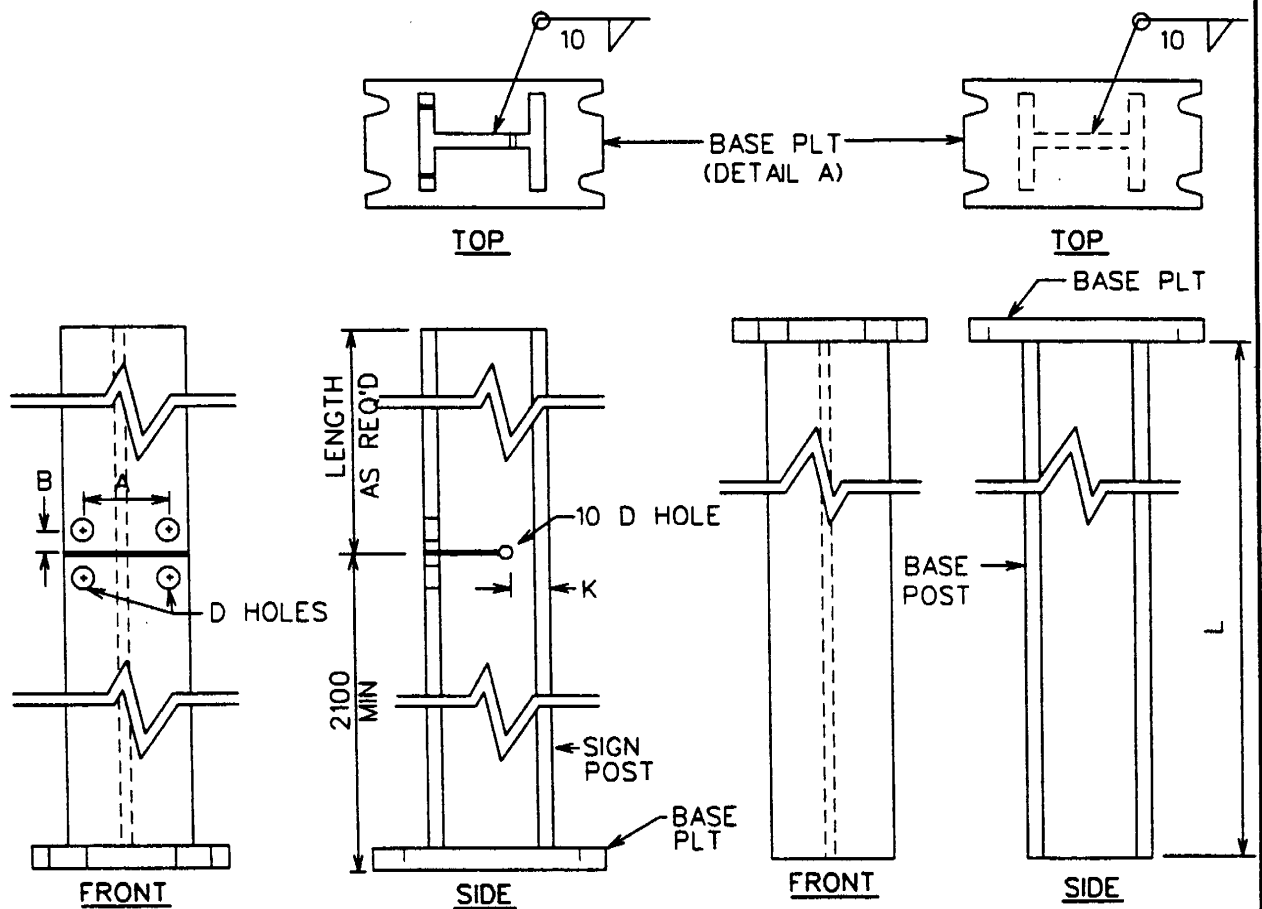
OMNI-DIRECTIONAL SLIPBASE W-SIGN & BASE POST

PWF07a-b

SHEET NO.	DATE
4 of 4	12-28-96



This is a preview. [Click here to purchase the full publication.](#)



SIGN POST: PWF11a-15a

BASE POST: PWF11b-PWF15b

DESIGNATOR	POST	BASE PLT	A	B	C	L	K
PWF11a-b	S75X8.5	FPS01	38	92	14	995	20
PWF12a-b	W150X18.0	FPS02	56	92	18	1280	20
PWF13a-b	W200X35.9	FPS03	89	105	22	1885	25
PWF14a-b	W250X49.1	FPS04	140	118	28	2490	30
PWF15a-b	W310X67	FPS05	140	140	28	2490	35

WIDE FLANGE BASE & SIGN POST



PWF11a-15b

SHEET NO:

DATE

1 OF 4

1996

This is a preview. Click here to purchase the full publication.

SPECIFICATIONS

Wide flange sign and base posts shall be manufactured using AASHTO M183M (ASTM A36M) steel with dimensions that conform to the sizes given in AASHTO M160M (ASTM A6M). Rectangular slipbase base plates shall be manufactured from AASHTO M183M (ASTM A36M) steel plate. A slipbase plate shall be welded onto the sign post (PWF11a-15a) and base post (PWF11b-15b) using a fillet welded all around the structural shape profile. All welding shall conform to ANSI/AASHTO/AWS D1.5. After all welding is complete the base-plate/base-post assembly shall be zinc coated according to AASHTO M111 (ASTM A123).

Designator	Area (10 ³ mm ²)	I _x (10 ⁶ mm ⁴)	I _y (10 ⁶ mm ⁴)	S _x (10 ³ mm ³)	S _y (10 ³ mm ³)
PWF11a-b	1.8	1.1	0.2	27.6	6.4
PWF12a-b	2.3	9.2	1.3	120.0	24.7
PWF13a-b	4.6	34.4	7.6	342.0	92.6
PWF14a-b	6.3	113.0	38.8	893.0	306.0
PWF15a-b	8.5	145.0	20.7	948.0	203.0

Dimensional tolerances not shown or implied are intended to be those consistent with the proper functioning of the part, including its appearance and accepted manufacturing practices.

INTENDED USE

These wide flange sign and base posts are used in the rectangular uni-directional slipbase (SSS01a-b).

WIDE FLANGE BASE & SIGN POST

PWF11a-15b

SHEET NO.

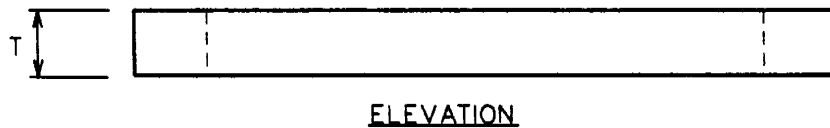
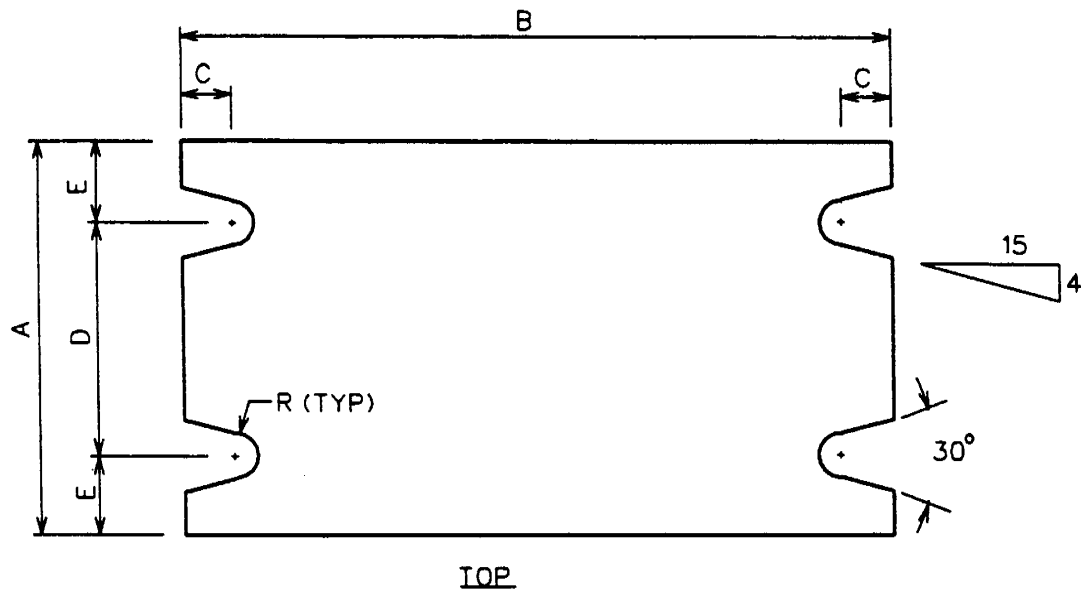
DATE

2 of 4

12-28-96



This is a preview. Click here to purchase the full publication.



DETAIL A: SLIPBASE PLATE

DESIGNATOR	A	B	C	D	E	R	T
PWF11a-b	100	180	20	50	25	7	25
PWF12a-b	102	250	20	50	26	9	40
PWF13a-b	166	320	22	80	43	11	45
PWF14a-b	202	400	32	120	41	14	50
PWF15a-b	254	450	32	150	52	14	50

WIDE FLANGE BASE & SIGN POST



PWF11a-15b

SHEET NO:

DATE

3 OF 4

1996

This page intentionally left blank

WIDE FLANGE BASE & SIGN POST

PWF11a-15b

SHEET NO.

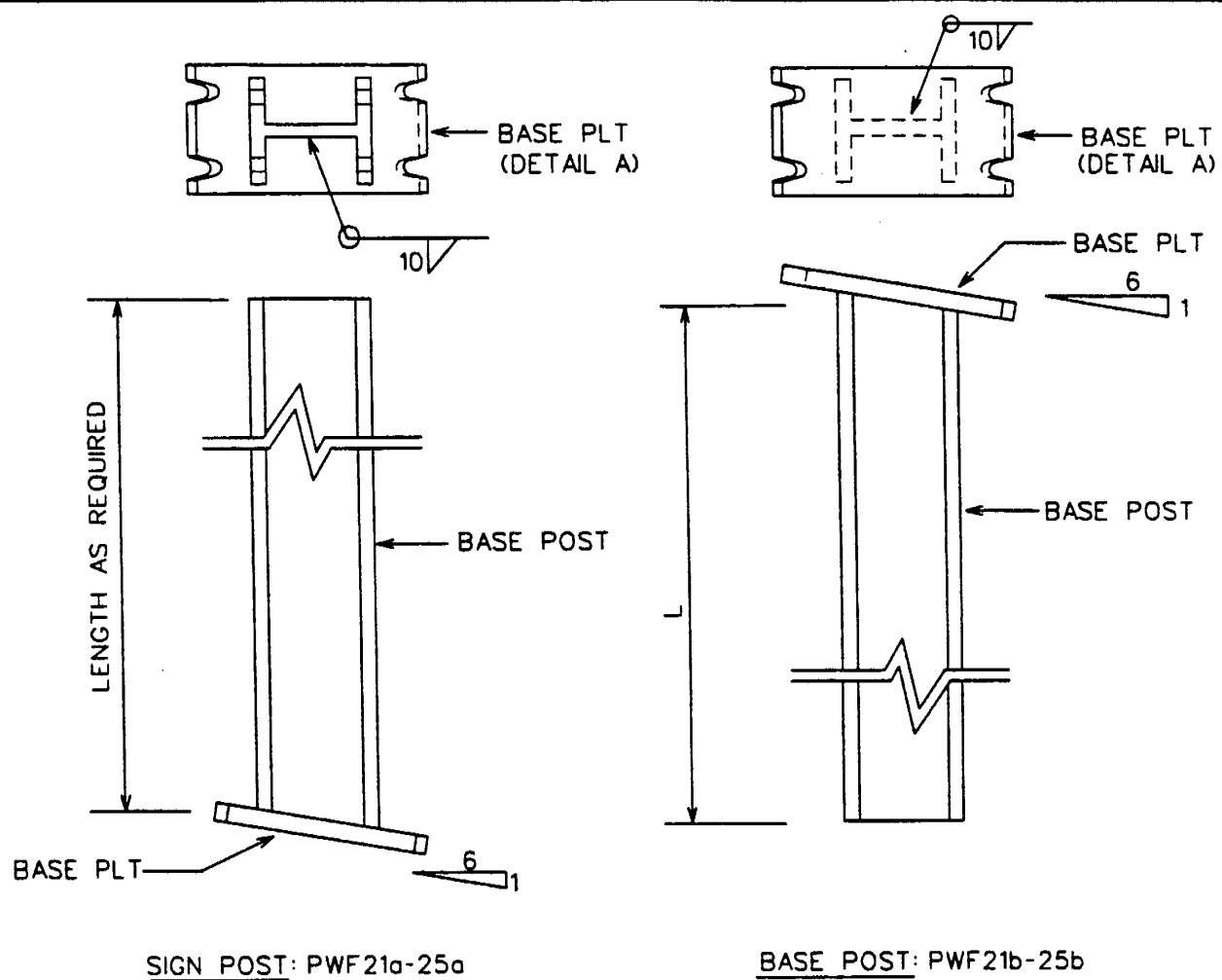
4 of 4

DATE

12-28-96



[This is a preview. Click here to purchase the full publication.](#)



DESIGNATOR	POST	L
PWF21a-b	S75X8.5	995
PWF22a-b	W150X18.0	1280
PWF23a-b	W200X35.9	1885
PWF24a-b	W250X49.1	2490
PWF25a-b	W310X67	2490

INCLINED WIDE FLANGE BASE & SIGN POST



PWF21a-25b

SHEET NO:

DATE

1 OF 4

1996

This is a preview. Click here to purchase the full publication.

SPECIFICATIONS

Inclined wide flange sign and base posts shall be manufactured using AASHTO M183M (ASTM A36M) steel with dimensions that conform to the sizes given in AASHTO M160M (ASTM A6M). The base plate shall be manufactured from AASHTO M183M (ASTM A36M) steel plates. Two slipbase plates shall be welded, one each, to the sign and base posts (PWF21a-25a) using a fillet weld all around the structural shape profile. All welding shall conform to ANSI/AASHTO/AWS D1.5. After all welding is complete the base-plate/base-post assembly shall be zinc coated according to AASHTO M111 (ASTM A123).

Designator	Area (10 ³ mm ²)	I _x (10 ⁶ mm ⁴)	I _y (10 ⁶ mm ⁴)	S _x (10 ³ mm ³)	S _y (10 ³ mm ³)
PWF21a-b	1.8	1.1	0.2	27.6	6.4
PWF22a-b	2.3	9.2	1.3	120.0	24.7
PWF23a-b	4.6	34.4	7.6	342.0	92.6
PWF24a-b	6.3	113.0	38.8	893.0	306.0
PWF25a-b	8.5	145.0	20.7	948.0	203.0

Dimensional tolerances not shown or implied are intended to be those consistent with the proper functioning of the part, including its appearance and accepted manufacturing practices.

INTENDED USE

Inclined wide flange sign and base posts are a component of the inclined rectangular uni-directional slipbase small sign support system (SSS02a-b).

INCLINED WIDE FLANGE BASE & SIGN POST

PWF21a-25b

SHEET NO.

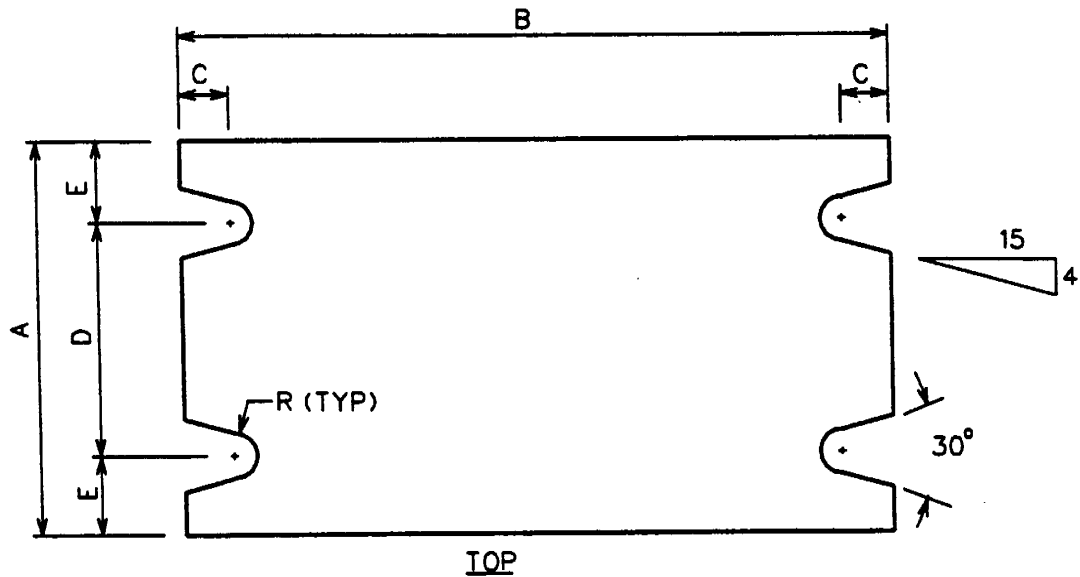
DATE

2 of 4

12-28-96



This is a preview. Click here to purchase the full publication.



DETAIL A: SLIPBASE PLATE

DESIGNATOR	A	B	C	D	E	R	T
PWF21a-b	100	180	20	50	25	7	25
PWF22a-b	102	250	20	50	26	9	40
PWF23a-b	166	320	22	80	43	11	45
PWF24a-b	202	400	32	120	41	14	50
PWF25a-b	254	450	32	150	52	14	50

INCLINED WIDE FLANGE BASE & SIGN POST



PWF21a-25b

SHEET NO:

DATE

3 OF 4

1996

This is a preview. [Click here to purchase the full publication.](#)

This page left blank

INCLINED WIDE FLANGE BASE & SIGN POST

PWF21a-25b

SHEET NO.

DATE

4 of 4

12-28-96



[This is a preview. Click here to purchase the full publication.](#)