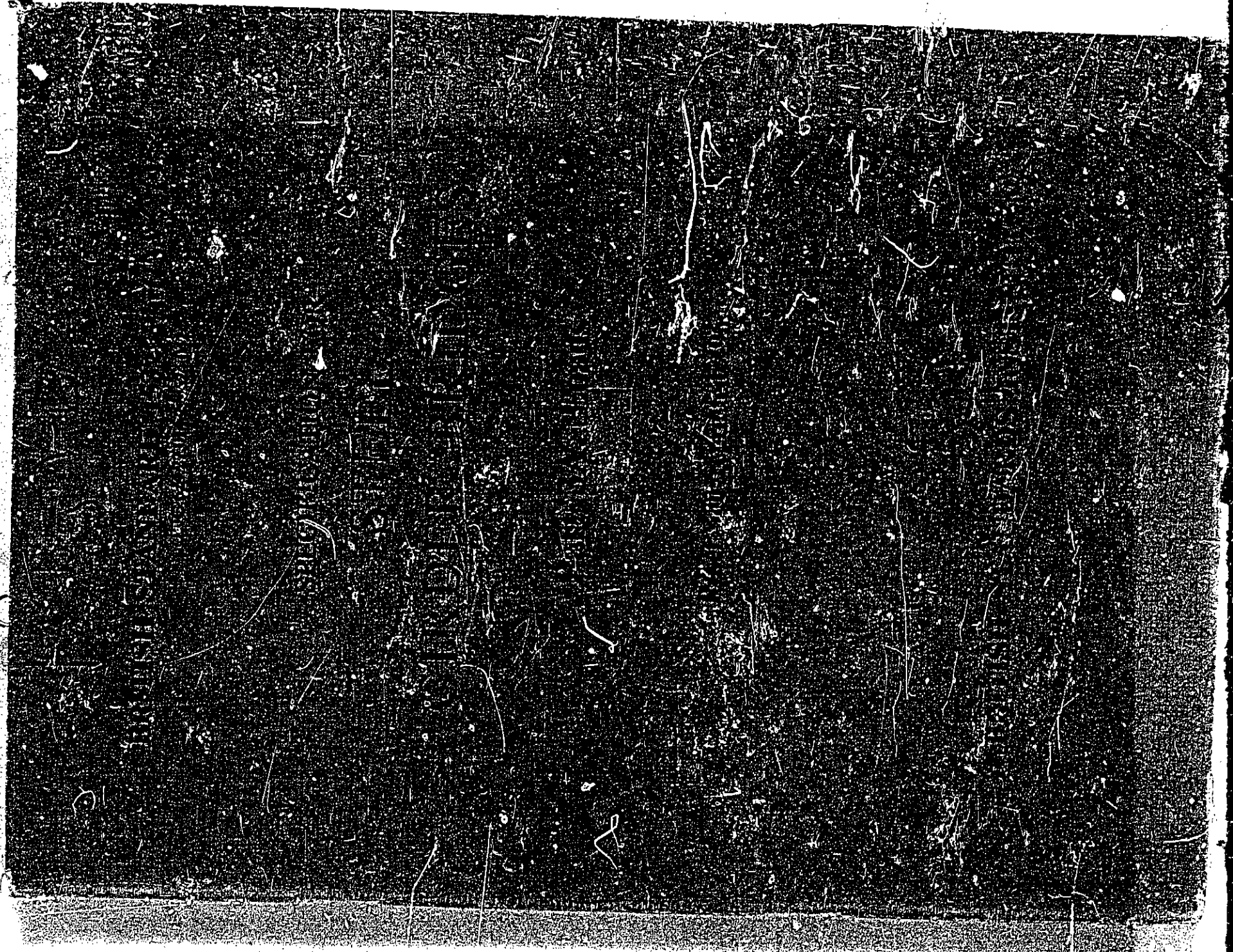


Please be aware that this PDF has been created from the original hardcopy document, which might not be in good condition and so the PDF might reflect this.





SPECIFICATION FOR
STEEL GIRDER BRIDGES

Part 3A. Loads

B.S. 153 : Part 3A : 1954

Incorporating amendments
issued January 1959 (PD 3262), March 1961 (PD 4070)
and March 1966 (PD 5748).

Price 15/- net

BRITISH STANDARDS INSTITUTION

INCORPORATED BY ROYAL CHARTER

BRITISH STANDARDS HOUSE, 2 PARK ST., LONDON, W.1

TELEGRAMS: STANDARDS LONDON W1

TELEPHONE: MAYFAIR 9530

THIS BRITISH STANDARD, having been approved by the Iron and Steel Industry Standards Committee and endorsed by the Chairman of the Engineering Divisional Council, was published under the authority of the General Council as a British Standard on 31st December, 1954.

First published (Parts 3, 4 and 5), August 1923.
Appendix No. 1 to Parts 3, 4 and 5, May 1925.
First revision (Part 3), September 1937.
Second revision (Part 3A), December 1954. :-
Reset and reprinted, April 1966.

The Institution desires to call attention to the fact that this British Standard does not purport to include all the necessary provisions of a contract.

In order to keep abreast of progress in the industries concerned, British Standards are subject to periodical review. Suggestions for improvements will be recorded and in due course brought to the notice of the committees charged with the revision of the standards to which they refer.

A complete list of British Standards, numbering over 4000, fully indexed and with a note of the contents of each, will be found in the British Standards Yearbook, price 15s. The B.S. Yearbook may be consulted in many public libraries and similar institutions.

This standard makes reference to the following British Standard:

B.S. 648. Schedule of weights of building materials.

British Standards are revised, when necessary, by the issue either of amendment slips or of revised editions. It is important that users of British Standards should ascertain that they are in possession of the latest amendments or editions.

The following B.S.I. references relate to the work in this standard:
Committee reference ISE/55. Draft for comment CO(ISE) 7622.

CONTENTS

Co-operating organizations	Page
Foreword	6
	7

SPECIFICATION

PART 3A. LOADS

1. General	9
2. Forces to be taken into account	9
3. Dead load	9
4. Live load	10
5. Impact effect on highway bridges	12
6. Impact effect on railway bridges	12
7. Lurching on railway bridges	13
8. Nosing on railway bridges	13
9. Centrifugal force on railway bridges	14
10. Longitudinal force on highway bridges	14
11. Longitudinal force on railway bridges	14
12. Wind pressure effects	15
13. Temperature effect	17
14. Frictional resistance of expansion bearings	17
15. Forces on parapets	17
16. Combination of forces	18
17. Erection forces and effects	18
18. Anchorage	18
Clauses to be referred to the engineer	18

APPENDIX A. STANDARD HIGHWAY LOADING

A1. Type HA loading	19
A2. Varied intensity of Type HA loading	19
A3. Application of Type HA loading	19
A4. Type HB loading	25
A5. Application of Type HB loading	25
A6. Equivalent abnormal loading for reinforced concrete slabs	26

CONTENTS—continued

APPENDIX B. STANDARD RAILWAY LOADING

B1. General	Page 26
B2. Type RA loading	26
B3. Type RB loading	28
B4. Lurching	29
B5. Dispersion of wheel loads	29

APPENDIX C. IMPACT FORMULAE

C1. Foxlee-Greet formulae	49
C2. The Government of India formulae	52
C3. American Railway Engineering Association formulae	53

APPENDIX D

Précis of Bridge Stress Committee's Report, 1928	54
--	----

APPENDIX E

Rules for designing steel railway bridge members in accordance with Clause 24 of Part 3B	56
--	----

TABLES

HIGHWAY BRIDGES

1. Type HA loading	22
--------------------	----

RAILWAY BRIDGES

2. Type RA1 loading. Normal standard unit loading for a single line of way for gauges of 4 ft 8½ in and over	32
3. Type RA2 loading. Normal standard unit loading for a single line of way for medium gauges 3 ft 6 in, 1 metre and 3 ft	38
4. Type RA1 loading. Static load per track for 20 units	44

CONTENTS—continued

5. Type RB loading. Total loads for bending moments at all points on the span, including allowance for impact, but excluding lurching	Page 45
6. Type RB loading. Total maximum shears per track, including allowance for impact but excluding lurching, for all speeds up to 6 rev/s.	46
7. Types RA1 and RB loading. Loads on cross girders, per track	47
8. Types RA1 and RB loading. Loads on rail-bearers and stringers, per rail	48
9. Numbers of stress cycles (in millions) for various bridge members and load groups	59

FIGURES

1. Loading curve for type HA highway loading.	23
2. Highway bridges type HB unit loading.	25
3. Railway bridges type RA1 unit loading per track for gauges of 4 ft 8½ in and over.	27
4. Railway bridges type RA2 unit loading per track for medium gauges (3 ft 6 in, 1 metre and 3 ft).	27
5. Railway bridges type RA3 unit loading per track for narrow gauges (2 ft 6 in and 2 ft).	27
6. Train and wheel speeds for various driving wheel diameters.	30
7. Railway bridges type RB unit loading.	31