



CAN/CSA-A5-93

CAN/CSA-A8-93

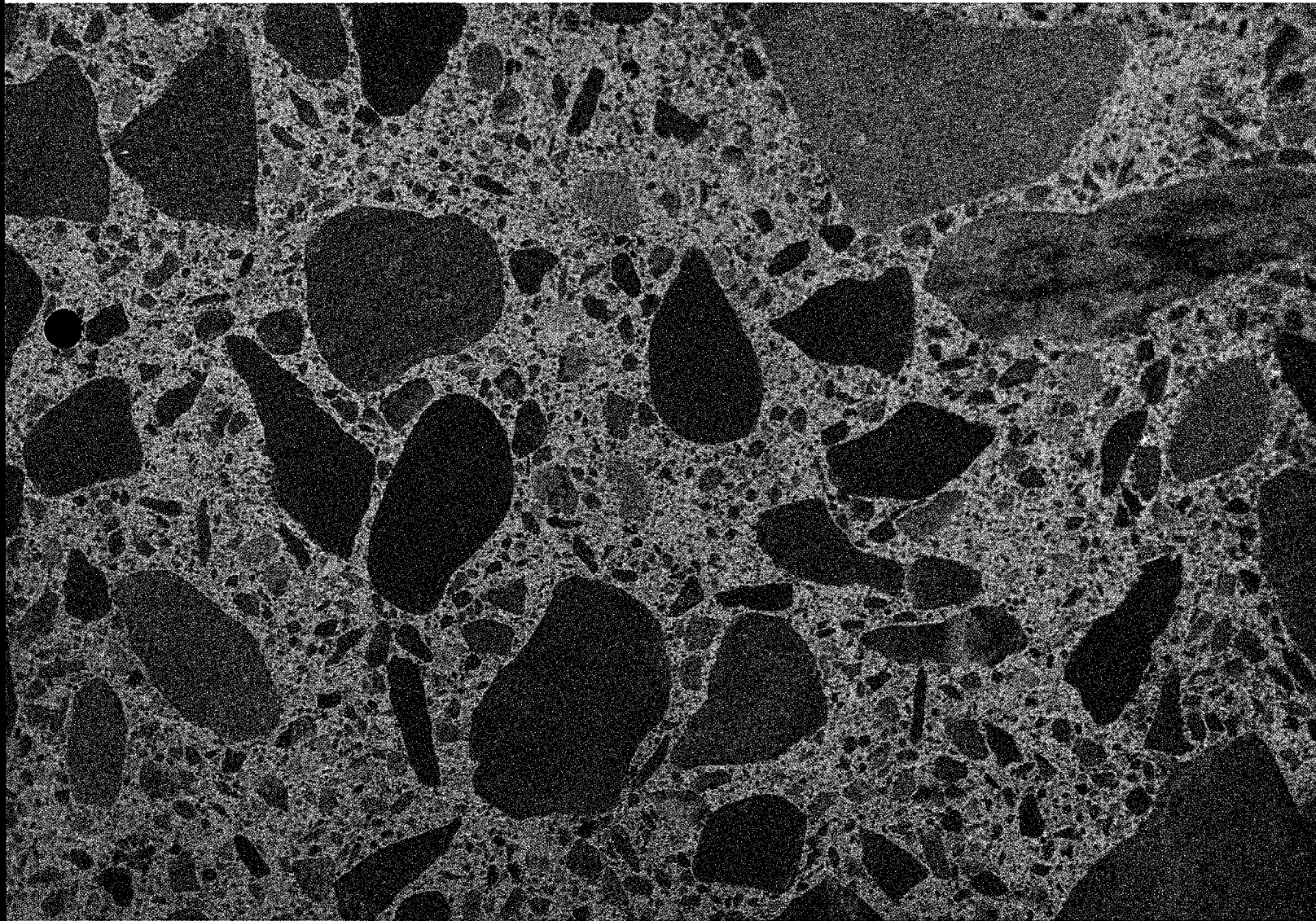
CAN/CSA-A362-93

**Portland Cement**

**Masonry Cement**

**Blended Hydraulic Cement**

*National Standards of Canada*



Concrete



**The Canadian Standards Association (CSA)**, under whose auspices this National Standard has been produced, was chartered in 1919 and accredited by the Standards Council of Canada to the National Standards system in 1973. It is a not-for-profit, nonstatutory, voluntary membership association engaged in standards development and certification activities.

CSA standards reflect a national consensus of producers and users — including manufacturers, consumers, retailers, unions and professional organizations, and governmental agencies. The standards are used widely by industry and commerce and often adopted by municipal, provincial, and federal governments in their regulations, particularly in the fields of health, safety, building and construction, and the environment.

Individuals, companies, and associations across Canada indicate their support for CSA's standards development by volunteering their time and skills to CSA Committee work and supporting the Association's objectives through sustaining memberships. The more than 7000 committee volunteers and the 2000 sustaining memberships together form CSA's total membership from which its Directors are chosen. Sustaining memberships represent a major source of income for CSA's standards development activities.

The Association offers certification and testing services in support of and as an extension to its standards development activities. To ensure the integrity of its certification process, the Association regularly and continually audits and inspects products that bear the CSA Mark.

In addition to its head office and laboratory complex in Rexdale (Toronto), CSA has regional branch offices in major centres across Canada and inspection and testing agencies in eight countries. Since 1919, the Association has developed the necessary expertise to meet its corporate mission: CSA is an independent service organization whose mission is to provide an open and effective forum for activities facilitating the exchange of goods and services through the use of standards, certification and related services to meet national and international needs.

For further information on CSA services, write to  
Canadian Standards Association  
178 Rexdale Boulevard  
Rexdale (Toronto), Ontario, Canada  
M9W 1R3

**The Standards Council of Canada** is the coordinating body of the National Standards system, a federation of independent, autonomous organizations working towards the further development and improvement of voluntary standardization in the national interest.

The principal objects of the Council are to foster and promote voluntary standardization as a means of advancing the national economy, benefiting the health, safety, and welfare of the public, assisting and protecting the consumer, facilitating domestic and international trade, and furthering international cooperation in the field of standards.

A National Standard of Canada is a standard which has been approved by the Standards Council of Canada and one which reflects a reasonable agreement among the views of a number of capable individuals whose collective interests provide to the greatest practicable extent a balance of representation of producers, users, consumers, and others with relevant interests, as may be appropriate to the subject in hand. It normally is a standard which is capable of making a significant and timely contribution to the national interest.

Approval of a standard as a National Standard of Canada indicates that a standard conforms to the criteria and procedures established by the Standards Council of Canada. Approval does not refer to the technical content of the standard; this remains the continuing responsibility of the accredited standards-writing organization.

Those who have a need to apply standards are encouraged to use National Standards of Canada whenever practicable. These standards are subject to periodic review; therefore, users are cautioned to obtain the latest edition from the organization preparing the standard.

The responsibility for approving National Standards of Canada rests with the  
Standards Council of Canada  
45 O'Connor Street  
Suite 1200  
Ottawa, Ontario  
K1P 6N7

National Standards of Canada are available in English or in French

*National Standards of Canada*

CAN/CSA-A5-93  
CAN/CSA-A8-93  
CAN/CSA-A362-93

***Portland Cement  
Masonry Cement  
Blended Hydraulic Cement***

*Prepared by  
Canadian Standards Association*



*Approved by  
Standards Council of Canada*



ISSN 0317-5669

*Published in May 1993 by Canadian Standards Association  
178 Rexdale Boulevard, Rexdale (Toronto), Ontario, Canada M9W 1R3*

**Technical Editor:** Tony Cautillo  
**Managing Editor:** Bernard Kelly

© Canadian Standards Association — 1993

*All rights reserved. No part of this publication may be reproduced in any form, in an electronic retrieval system or otherwise, without the prior permission of the publisher.*

# Contents

Technical Committee on Hydraulic Cement 9

Preface 13

## **CAN/CSA-A5-93**

### **Portland Cement**

#### **1. Scope 17**

1.1 Scope 17

1.2 Types 17

#### **2. Reference Publications and Definition 17**

2.1 Reference Publications 17

2.2 Definition 18

#### **3. General Requirements 18**

3.1 Chemical Requirements 18

3.2 Physical Requirements 19

3.2.1 General 19

3.2.2 Retest 19

3.3 Uniformity Requirements 19

3.3.1 General 19

3.3.2 Time of Test 19

#### **4. Testing, Inspection, and Sampling 19**

4.1 Samples to be Tested 19

4.2 Tests by the Manufacturer 20

4.3 Tests by the Purchaser 20

4.4 Frequency of Testing 20

4.5 Optional Tests 20

4.6 Provision of Typical Test Data or Certificates 21

4.7 Test Reports 21

4.8 Inspection and Sampling — General 21

4.9 Identification of Lots and Samples 22

4.10 Type and Size of Samples 22

4.11 Frequency of Sampling 22

4.12 Methods and Equipment for Taking Single Samples 22

4.12.1 Automatic Sampling Devices 22

4.12.2 Manual Sampling of Bulk Cement 23

4.12.3 Manual Sampling of Bagged Cement 23

4.12.4 Sample Containers 23

4.13 Preparation of Composite Sample 23

4.14 Sieving 23

4.15 Splitting of Test Samples 23

#### **5. Units, Packaging, Marking, and Storage 23**

5.1 Units for Bulk Cement 23

5.2 Packaging 24

5.3 Marking 24

5.3.1 Bagged Cement 24

5.3.2 Bulk Cement 24

5.4 Storage 24

**6. Methods for Chemical Analysis 24**

6.1 Equipment and Materials 24

6.2 Chemical Analysis 24

6.3 Test Procedures 24

6.3.1 Loss on Ignition 24

6.3.2 Insoluble Residue 25

6.3.3 Sulphur Trioxide ( $\text{SO}_3$ ) 25

6.3.4 Tricalcium Aluminate ( $\text{C}_3\text{A}$ ) 26

6.3.5 Ferric Oxide ( $\text{Fe}_2\text{O}_3$ ) 26

6.3.6 Combined Oxides of the Ammonium Hydroxide ( $\text{NH}_4\text{OH}$ ) Group 26

6.3.7 Aluminium Oxide ( $\text{Al}_2\text{O}_3$ ) 28

6.3.8 Magnesium Oxide ( $\text{MgO}$ ) 28

**7. Methods for Physical Tests 29**

7.1 General Requirements and Apparatus 29

7.2 Index to Physical Tests 29

7.3 Powder Tests 29

7.3.1 Determination of Fineness 29

7.4 Paste Tests 31

7.4.1 Mixing Cement Paste 31

7.4.2 Determination of Normal Consistency 32

7.4.3 Determination of Setting Time — Vicat Method 32

7.4.4 Determination of Soundness by Autoclave Expansion Test 33

7.4.5 Determination of Heat of Hydration 35

7.5 Mortar Tests 35

7.5.1 Mortar Mixing 35

7.5.2 Determination of Mortar Flow 36

7.5.3 Compressive Strength 36

7.5.4 Sulphate Resistance 40

7.5.5 Sulphate Expansion 42

**8. Equipment and Materials 42**

8.1 General 42

8.2 Equipment and Materials 42

8.3 Conditions 43

8.3.1 Room 43

8.3.2 Humidity Cabinet 43

8.3.3 Water Storage 43

8.4 Equipment 43

8.4.1 Autoclave 43

8.4.2 Compression Test Equipment 46

8.4.3 Flow Table 48

8.4.4 Glassware 50

8.4.5 Mixer and Accessories 51

8.4.6 Sampling Tube 51

8.4.7 Sieves 52

8.4.8 Tamper 52

8.4.9 Trowel 52

8.4.10 Vicat and Gillmore Test Equipment	52
8.4.11 Volume Measure	52
8.4.12 Water Retention Test Apparatus	53
8.4.13 Weighing Equipment	53
8.4.14 Wet-Sieving Equipment	54
8.5 Materials	55
8.5.1 Chemicals	55
8.5.2 Gypsum for Sulphate Resistance Tests	56
8.5.3 Sand	56
8.5.4 Water	57
<b>9. Method of Uniformity Calculation</b>	<b>57</b>
9.1 General	57
9.2 Sample and Sampling	57
9.3 Calculation Formulae	57
<b>Tables</b>	<b>58</b>
<b>Figures</b>	<b>64</b>
<b>Appendices</b>	
A — Early Stiffening of Cement Paste	76
B — Precision of Test Methods	79
C — Optional Chemical Methods	80
<b>CAN/CSA-A8-93</b>	
<b>Masonry Cement</b>	
<b>1. Scope</b>	<b>83</b>
1.1 General	83
1.2 Classification of Masonry Cement	83
1.2.1 Type N	83
1.2.2 Type S	83
<b>2. Reference Publications</b>	<b>83</b>
<b>3. Test Requirement for Masonry Cement</b>	<b>83</b>
<b>4. Packaging, Marking, and Storage of Masonry Cement</b>	<b>84</b>
4.1 Packaging and Marking	84
4.1.1 Bagged Cement	84
4.1.2 Bulk Shipments	84
4.2 Storage	84
<b>5. Inspection and Sampling of Masonry Cement</b>	<b>84</b>
5.1 Inspection	84
5.2 Sampling	84
<b>6. Sampling Methods for Testing Masonry Cement</b>	<b>84</b>
6.1 Samples	84
6.1.1 General	84
6.1.2 Test Samples	84
6.2 Methods of Sampling	84
6.2.1 Automatic Sampling Devices	84
6.2.2 Manual Sampling of Bulk Cement	85
6.2.3 Manual Sampling of Bagged Cement	85
6.3 Frequency of Sampling	85

6.3.1	Cement Shipped by Rail	85
6.3.2	Cement Shipped by Truck	85
6.3.3	Lot Quantities in Storage	85
6.4	Handling of Sample	86
6.4.1	Containers	86
6.4.2	Identification of Containers	86
6.4.3	Preparation of Test Samples Before Testing	86
<b>7.</b>	<b>Methods for Physical Testing of Masonry Cement</b>	<b>86</b>
7.1	General Requirements	86
7.1.1	Tests	86
7.1.2	Accuracy of Scales and Weights	86
7.1.3	Accuracy of Glass Graduates	86
7.1.4	Temperature and Humidity	86
7.2	Preparation of Cement Paste	87
7.2.1	General	87
7.2.2	Mechanical Mixing Apparatus	87
7.2.3	Mixing Procedure	87
7.3	Determination of Normal Consistency	87
7.3.1	Vicat Apparatus	87
7.3.2	Moulding the Test Specimen	87
7.3.3	Consistency Determination	88
7.3.4	Calculation of Water Content	88
7.4	Determination of Soundness	88
7.4.1	General	88
7.4.2	Determination of Soundness by Autoclave Expansion Test	88
7.4.3	Determination of Soundness by Atmospheric Steam Expansion Test	90
7.5	Determination of Time of Setting	90
7.5.1	General	90
7.5.2	Determination of Time of Setting — Gillmore Method	90
7.5.3	Determination of Time of Setting — Vicat Method	92
7.6	Preparation of Cement Mortars for the Determination of Flow, Entrained Air, Compressive Strength, and Water Retention	92
7.6.1	Proportions by Volume	92
7.6.2	Blended Sand	93
7.6.3	Sieves	93
7.6.4	Mass of Cement	93
7.6.5	Mixing Water	93
7.6.6	Mechanical Mixing Apparatus	93
7.6.7	Temperature	93
7.6.8	Mixing Procedure	94
7.6.9	Sequence of Tests	94
7.7	Determination of Flow of Mortar	94
7.7.1	Flow Table	94
7.7.2	Flow Table Mould	94
7.7.3	Flow Table Caliper	94
7.7.4	Tamper	94
7.7.5	Procedure	95
7.8	Determination of Entrained Air	95
7.8.1	Measure	95



7.8.2	Calibration of Measure	95
7.8.3	Capacity	95
7.8.4	Mass per 400 mL	96
7.8.5	Density of Cement	96
7.8.6	Le Chatelier Flask	96
7.8.7	Standard Liquids	96
7.8.8	Procedure for Density Determination	97
7.8.9	Calculation of Density	97
7.8.10	Calculation of Air Content	98
7.8.11	Reproducibility	98
7.8.12	Mortar Remixing Procedure	98
7.9	Determination of Compressive Strength	98
7.9.1	Test Specimens	98
7.9.2	Moulds	98
7.9.3	Preparation of Moulds	98
7.9.4	Moulding Test Specimens	98
7.9.5	Storage of the Test Specimens	99
7.9.6	Testing Machine	99
7.9.7	Age of Test	99
7.9.8	Preparation of Cubes	100
7.9.9	Testing Operations	100
7.9.10	Calculation	100
7.10	Water Retention Test	100
7.10.1	Apparatus	100
7.10.2	Verification of the Apparatus	100
7.10.3	Procedure	100
7.10.4	Calculation	101

**Table** 102

**Figures** 103

**Appendix A — Sampling and Inspection** 104

**CAN/CSA-A362-93**

**Blended Hydraulic Cement**

**1. Scope** 107

1.1 Scope 107

1.2 Types 107

1.3 Requirements 107

**2. Reference Publications and Definitions** 108

2.1 Reference Publications 108

2.2 Definitions 108

**3. General Requirements** 109

3.1 Additions 109

3.2 Chemical Requirements 109

3.3 Physical Requirements 110

3.3.1 General 110

3.3.2 Retest 110

**4. Testing, Inspection, and Sampling** 110