

JIS

JAPANESE INDUSTRIAL STANDARD

**Reinforced Concrete Built-up
Retaining Walls**

Ⓔ **JIS A 5312**—1990

Translated and Published

by

Japanese Standards Association

In the event of any doubt arising,
the original Standard in Japanese is to be final authority.



JAPANESE INDUSTRIAL STANDARD

J I S

Reinforced Concrete Built-up
Retaining Walls

A 5312-1990

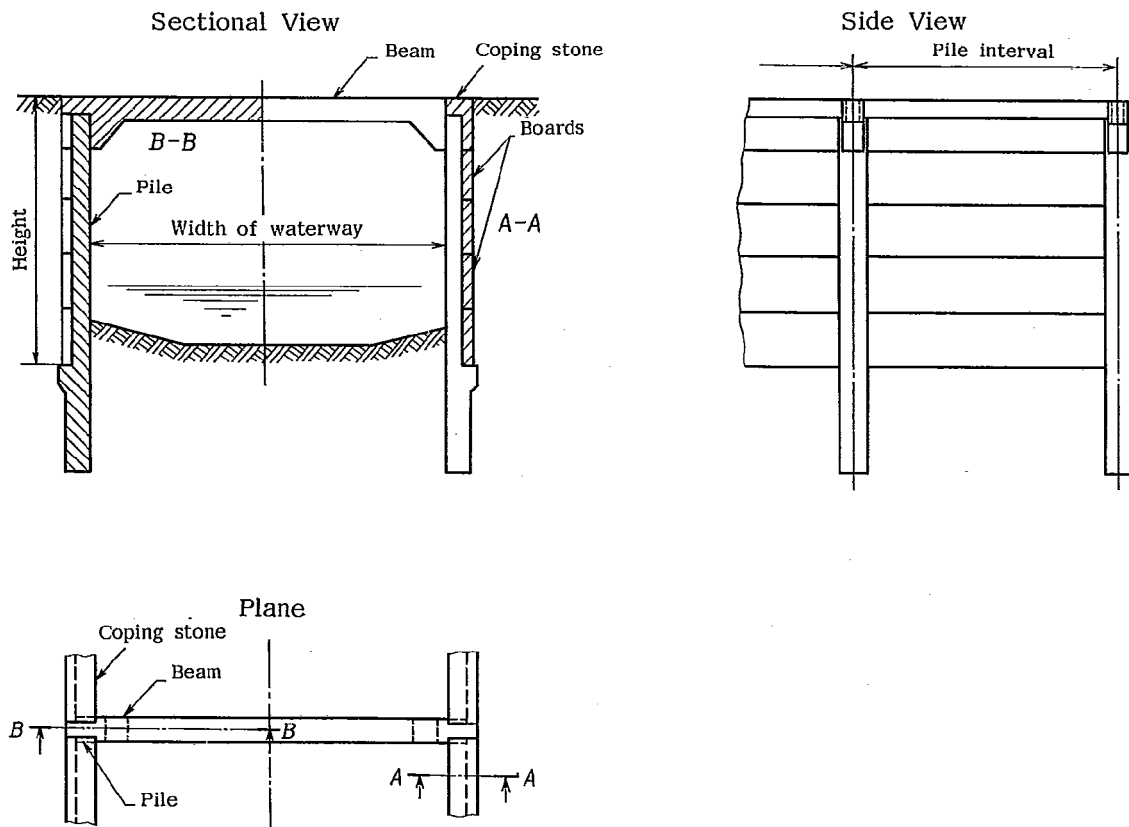
1. Scope

This Japanese Industrial Standard specifies the reinforced concrete built-up retaining walls (hereafter referred to as the "retaining walls") to be used for the retaining walls, irrigation and drainage canals, revetments of small rivers, and others in the locality where no influence of wheel load exists and earth pressure is comparatively small.

The retaining walls shall consist of the members of piles, boards, beams and coping stones, and the names and construction of the individual members shall be as given in Fig. 1.

Remark: The units and numerical values given in { } in this Standard are based on the International System of Units (SI) and are appended for informative reference.

Fig. 1. Names of Individual Members and Assembling



Applicable Standards: See page 12.